

# QUANTOFIX® Total acid

en

## Description:

QUANTOFIX® Total acid are test strips for semi-quantitative determination of the total acid content. The total acid content is expressed as g of citric acid per L. QUANTOFIX® Total acid test strips are also suitable for reflectometric evaluation using the QUANTOFIX® Relax (REF 913 46).

## Pack content:

1 aluminium can with 100 test strips

## Measurement range

Visually  
2–5 g/L citric acid

Reflectometrically  
2–5 g/L citric acid

## Color gradations:

0 · 2.0 · 2.5 · 3.0 · 3.5 · 4.0 · 5.0 g/L citric acid

## General indications:

Always withdraw only the required number of test strips. Immediately reseal can after withdrawal. Do not touch the test fields.

## Instructions for use:

1. Dip test strip into the test solution for 2 seconds.
2. Shake off excess liquid.
3. Wait 5 minutes.

4. Compare the test fields immediately to the color scale. Read the values which match the color of the test fields most closely (reading accuracy:  $\pm \frac{1}{2}$  colored field of the scale).

The reaction color of the test fields may continue to change after elapse of the reaction time. It is therefore important to perform the evaluation at the specified time in order to achieve correct results.

## Interferences:

The determination is not disturbed by the following maximum concentrations of impurities (tested with citric acid solutions of 0 and 3.5 g/L):

5000 mg/L: Na<sup>+</sup>, K<sup>+</sup>, Cl<sup>-</sup>, I<sup>-</sup>, SO<sub>4</sub><sup>2-</sup>

2000 mg/L: H<sub>2</sub>O<sub>2</sub>

1000 mg/L: NO<sub>3</sub><sup>-</sup>, NO<sub>2</sub><sup>-</sup>

750 mg/L: Cu<sup>2+</sup>

500 mg/L: Mg<sup>2+</sup>

350 mg/L: Ca<sup>2+</sup>

## Notes:

Carbonic acid is also detected by this test, and the sample should therefore be degassed beforehand.

If the test strips indicate a value in excess of 5 g/L, the sample must be diluted until the total acid content is in the measuring range of the test paper. When indicating the content, consider the dilution factor.

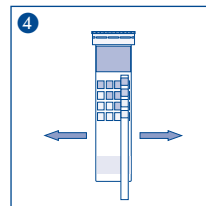
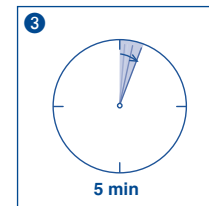
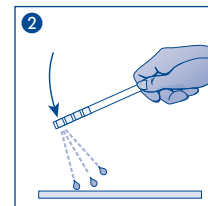
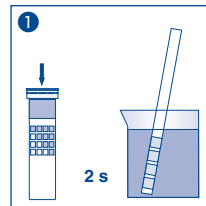
## Disposal:

Dispose of used test strips into the household waste.

## Storage:

Avoid exposing the test strips to light and moisture. Keep container in a cool, dry place (storage temperature not above 30 °C / 86 °F).

If stored properly, the test can be used until the imprinted expiration date.



REF	Artikelnummer / Item number / Référence produit / Referencia / Artikelnummer / Numero di catalogo / Numer artykułu	LOT	Chargencode / Batch identification / Número de lot / Código de lote / Produktionnummer / Codice del lotto / Numer partii
	Achtung! / Warning! / Attention! / ¡Atención! / Let op! / Attenzione! / Uwaga!		Verwendbar bis / Use by / À utiliser avant / Fecha de caducidad / Te gebruiken tot / Utilizzare entro (anno / mese) / Przydatność do użycia
	Temperaturbegrenzung / Permitted storage temperature range / Limites de température / Limites de temperatura / Temperatuurbegrenzing / Limite de tem- peratura / Ograniczenie temperatury		Trocken aufbewahren / Store in a dry place / Conserver au sec / Mantener seco / Op een droge plaats bewaren / Mantenerse asciutto / Przechowywać w suchym miejscu
	Gebrauchsanweisung beachten / Please read instructions for use / Respecter les instructions d'utilisation / Obsérvense las instrucciones de uso / Lees de bijsluiter / Consultare le istruzioni per l'uso / Przestrzegać instrukcję użycia		Packung geschlossen halten / Keep container closed / Refermer la boîte / Mantenga el envase cerrado / Verpak- king gesloten houden / Conservare la confezione chiusa / Przechowywać pojemnik szczelnie zamknięty
	Ausreichend für <n> Prüfungen / Contains sufficient for <n> tests / Contenu suffisant pour <n> tests / Contenido suficiente para <n> tests / Voldoende voor <n> tests / Contenuto sufficiente per <n> test / Wystarczająco dla kontroli <n>		