

Pack content:

1 aluminum container with 100 test strips

Measuring range:

Visually	Reflectometrically
10–500 mg/L NO ₃ ⁻	10–500 mg/L NO ₃ ⁻
1–80 mg/L NO ₂ ⁻	0.5–80 mg/L NO ₂ ⁻

Color gradation:

0 · 10 · 25 · 50 · 100 · 250 · 500 mg/L NO₃⁻
 0 · 1 · 5 · 10 · 20 · 40 · 80 mg/L NO₂⁻

General indications:

Remove only as many test strips as are required. Close the container immediately after removing a strip. Do not touch the test fields.

Instructions for use:

1. Dip the test strip with both fields into the test solution (pH 1–9) for 1 s.
2. Shake off excess liquid.
3. Wait 60 s.
4. Compare with the color scale. If nitrate ions are present, the lower test field (at the end of the strip) will turn red-violet. The upper test field will show the nitrite concentration.

Interferences (Nitrate):

If the nitrite test field turns red-violet, the nitrate determination will be affected. To eliminate the interference due to nitrite, add 1 spoon sulfamic acid (REF 918 973) to 10 mL of the sample, shake again and repeat the test after 2 minutes. This allows the determination of 10 mg/L nitrate and 1000 mg/L nitrite simultaneously.

Interferences (Nitrite):

Strongly acid solutions (pH < 1) have to be buffered with sodium acetate; alkaline solutions have to be set to a pH value of 3–5 using citric acid. The following ions interfere with the determination in higher concentrations:

> 1000 mg/L Br⁻, BrO₃⁻, Cl⁻, ClO₃⁻, ClO₄⁻, F⁻, I⁻, Mo₇O₂₄⁶⁻, NO₃⁻, OCN⁻, PO₄³⁻, SO₃²⁻, SO₄²⁻, SeO₃²⁻, WO₄²⁻, acetate, oxalate, tartrate, citrate, succinate, Ag⁺, Al³⁺, As³⁺, Ba²⁺, Be²⁺, Co²⁺, Cd²⁺, Cr³⁺, Cu²⁺, Hg²⁺, K⁺, Li⁺, Mg²⁺, Mn²⁺, Na⁺, Ni²⁺, Pb²⁺, Sb³⁺, Ti⁺, Zn²⁺, > 250 mg/L S₂O₃²⁻, S₂O₅²⁻, > 100 mg/L [Fe(CN)₆]⁴⁻, S₂O₄²⁻, SCN⁻, ascorbate.

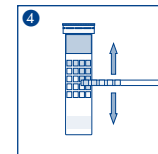
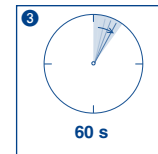
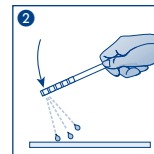
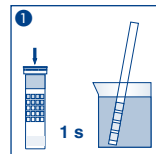
Disposal:

Used test strips can be placed in the normal household waste.

Storage:

Avoid exposing the strips to sunlight and moisture. Keep container cool and dry (storage temperature not above +30 °C).

If correctly stored, the test strips may be used until the use-by-date printed on the packaging.



REF	Artikelnummer / Item number / Référence produit / Referencia / Artikelnummer / Numero di catalogo / Numer artykułu	LOT	Chargencode / Batch identification / Numéro de lot / Código de lote / Productienummer / Codice del lotto / Numer partii
	Achtung! / Warning! / Attention! / ¡Atención! / Let op! / Attenzione! / Uwaga!		Verwendbar bis / Use by / À utiliser avant / Fecha de caducidad / Te gebruiken tot / Utilizzare entro (anno / mese) / Przydatność do użycia
	Temperaturbegrenzung / Permitted storage temperature range / Limites de température / Limites de temperatura / Temperaturbegrenzung / Limite de temperatura / Ograniczenie temperatury		Trocken aufbewahren / Store in a dry place / Conserver au sec / Mantener seco / Op een droge plaats bewaren / Mantenerse asciutto / Przechowywać w suchym miejscu
	Gebrauchsanweisung beachten / Please read instructions for use / Respecter les instructions d'utilisation / Obsérvense las instrucciones de uso / Lees de bijsluiter / Consultare le istruzioni per l'uso / Przestrzegać instrukcję użycia		Packung geschlossen halten / Keep container closed / Refermer la boîte / Mantenga el envase cerrado / Verpakking gesloten houden / Conservare la confezione chiusa / Przechowywać pojemnik szczelnie zamknięty
	Ausreichend für <n> Prüfungen / Contains sufficient for <n> tests / Contenu suffisant pour <n> tests / Contenido suficiente para <n> tests / Voldoende voor <n> tests / Contenuto sufficiente per <n> test / Wystarczająco dla kontroli <n>		